

This manufacturer's instructions and information must be read and well understood by the user before using the device. Check that the device has been supplied intact, in the original packaging and with its information. For devices sold in different countries from the destination of origin, the distributor must verify and supply the translation of this information.

It is essential to carry out risk assessment and ensure that the entire system, of which this device is only one part, is both reliable and safe. There must be in place a rescue plan to deal with any emergencies that could arise while using the device. The position of the anchor device or the anchor point must be as high as possible, while the height of potential falls must be reduced to the minimum. Devices employed must be suitable for the purpose and certified. In a fall arrest system it is mandatory to use a full body harness being the only device suitable for this use and it must comply with current regulations. Assess the clearance under the user, the height of a potential fall, the stretch of the line/rope, the deployment of an eventual energy absorber, the height of the user, and the "pendulum" effect, in order to avoid any possible obstacle.

Before and after use the user must carry out all the checks described, and in particular make sure that the device is in optimal conditions, works properly, and is suitable for use (any other use is non-compliant and therefore potentially dangerous). Inspections of Category III devices shall be carried out at least every 12 months starting from the first use, by a competent person (e.g. a "KONG PPE Inspector") in compliance with the manufacturer's requirements. The time interval between inspections can be reduced according to the type, the frequency and the environment of use. The results of periodic inspections must be recorded on the device inspections form or on a designated register.

The lifespan of the metal components is indefinable, theoretically unlimited, while those affected by aging report the expiration date over which the device shall be replaced. This provided that the device was not used to stop a fall; storage, maintenance, use, comply with the information in this information; the results of pre-use and post-use checks and inspections are positive; the device is used not exceeding the marked breaking load of 1/4 for metal devices, or 1/10 for textile devices.

**Important**

This device can be used in combination with other devices when compatible with relevant manufacturer information. Discard the devices used to stop a fall or which have not passed pre-use or post-use checks, or periodic inspections. Personal use of the device is recommended. If the user has the slightest doubt about the efficiency of the device shall replace it immediately, particularly after using it to stop a fall. Avoid exposing the device to sources of heat and contact with substances chemical. Reduce direct exposure to the sun, in particular for textile and plastic devices. Low temperatures and humidity can facilitate the formation of ice, make it difficult to make connections, reduce flexibility, as well as increasing the risk of breakage, cutting and abrasion. The minimum strength of the anchor points shall be at least 12 kN, both made on natural and artificial elements. The evaluation of those made on natural elements (rock, plants, etc.) are only possible in an empirical way, so it shall be carried out by a trained and experienced person. For those made on elements artificial (metal, concrete, etc.), the evaluation can be carried out scientifically, therefore it shall be carried out by a trained and authorized person.

**Warning**

Prolonged suspension, especially if inert, can cause damage irreversible and even death. It is absolutely forbidden to modify and / or repair the device, outside than what is prescribed in this information. This device shall only be used by users medically fit, trained (and educated) for use or under direct control of trainers / supervisors. Improper use, deformations, falls, wear, chemical contamination, exposure to temperatures below -30 ° C or above + 50 ° C for textile/plastic parts/devices and + 120 ° C for metal devices, are some examples of other causes that can reduce, limit and terminate the life of the device.

The device WILO is a weight suitable to be used as weight to prevent kinking and entanglement of the hoist cable.

Compatibility – This device has been designed according the following parameters:

- the connector opening can accept a maximum diameter of 21mm;
- the minimum weight of 982535000KK is 3kg;
- the minimum weight of 982535001KK is 4.6kg;
- the elastic eyelets are suitable to restrain light sticks for nocturnal operations.

Checks before and after use - Before and after use, make sure that the device is in an efficient condition and that it is working properly, in particular, check that:

- it is suitable for the intended use;
- has not been mechanically deformed;
- does not show cracks, wear, corrosion and oxidation;
- mobile parts move or rotate without excessive resistance;
- markings are legible;
- the gate of the carabiner shall:
  - when actuated, open completely;
  - when released, close completely and automatically.

It is recommended to periodically clean and lubricate mobile parts with a moderate amount of silicon-based oil. Before use and in a position that is completely safe, on each occasion check that the device holds correctly.

**Important:**

- keep in mind this device length;
- never grip on this device as aid in climbing;
- keep in mind possible accidental openings (e.g. due to shock, vibrations, falls, etc.);
- the foreseeable load direction must be close as possible to the back of the carabiner (C);
- connection with wide elements can compromise closing and locking of the of the gate of the carabiner;
- proceed with maintenance and disinfection (if needed) in case this device comes in contact with chemicals, corrosive fluid, bodily fluids, salt water, mud, dust, or in case it develops oxidation, mold.

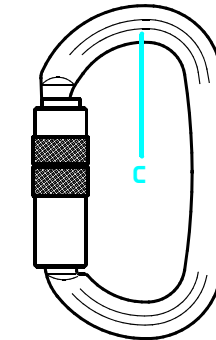
Before use, verify in the hoist instructions and information supplied by its manufacturer the minimum weight recommended.

**INSPECTION SHEET**

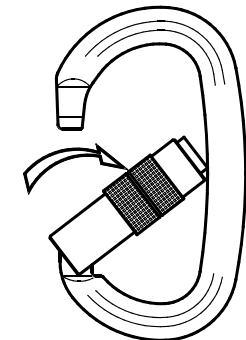
1	2			
3	4	5		
6	7			
8	9	10	11	12

1	Model - Modello - Modèle - Modell - Modelo - Modelo
2	Serial number - Numero seriale - Numéro de série - Seriennummer Número de serie - Número de série
3	Production date - Data di produzione - Date de production - Herstellungsdatum Fecha de producción - Data de produção
4	Expiring date - Data di scadenza - Date de péremption - Gültigkeitsdatum Fecha de caducidad - Prazo de validade
5	First use date - Data di primo utilizzo - Date de première utilisation Datum der Erstbenutzung Fecha del primer uso - Data da primeira utilização
6	User name - Nome utilizzatore - Nom d'utilisateur - Name des Anwenders Nombre del usuario - Nome do utilizador
7	Place of purchase - Luogo di acquisto - Lieu d'achat - Verkaufsort Lugar de adquisición - Local de compra
8	Inspection date - Data ispezione - Date de l'inspection - Datum der Inspektion Fecha de Inspección - Data da inspeção
9	Result - Risultato - Résultat - Ergebnis - Resultado - Resultado
10	Comments - Commenti - Commentaires - Anmerkungen - Comentários Comentários
11	Next inspection before - Prossima ispezione entro - Prochaine inspection avant le Nächste Inspektion innerhalb von - Próxima inspección dentro de - Próxima inspeção dentro de
12	Inspector's sign - Firma ispettore - Signature de l'inspecteur - Unterschrift des Prüfers Firma del Inspector - Assinatura do inspetor

**CARABINER OPENING**

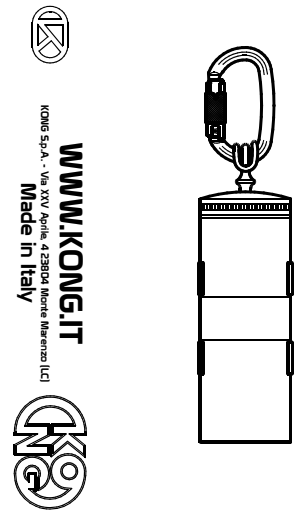


**TWIST 90°**



**OPEN**

**WILO**



KONG S.p.A. Via XXV Aprile, 4 22039 Inverigo (Lecco) - Italy  
**WWW.KONG.IT**  
Made in Italy



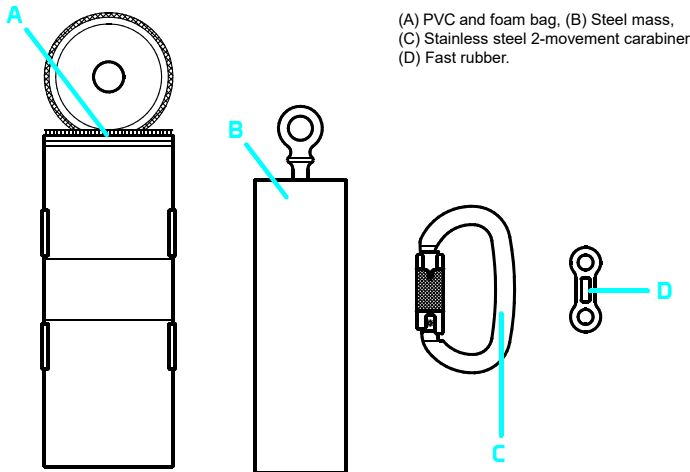
0 0 0 max.08850VAZZ

982535000KK  
982535001KK

**SYMBOLS USED**

- Correct use - Uso corretto - Utilisation correcte - Sachgemäßer Gebrauch - Uso correcto - Utilização correta
- Wrong use - Uso errato - Mauvaise utilisation - Unsachgemäßer bzw. falscher Gebrauch - Uso equivocado  
Utilização incorreta
- Attention, not allowed - Attenzione, non consentito - Attention, non autorisé - Achtung, nicht erlaubt  
Atención, no permitido - Atenção, não permitido
- Danger of death - Pericolo di morte - Danger of mort - Todesgefahr - Peligro de muerte - Perigo de morte
- Anchor point - Punto di ancoraggio - Point d'ancrage - Anschlagpunkt - Punto de anclaje - Ponto de ancoragem
- Manoeuvre with the need of manual control - Manovra con necessità di controllo manuale - Manoeuvre avec nécessité d'un contrôle manuelle -  
Manöver mit einer erforderlichen manuellen Kontrolle - Manobra con necesidad de control manual - Manobras com necessidade de controle manual
- Attached person - Persona collegata - Personne rattachée - Verbundene Person - Persona enganchada  
Pessoa ligada
- Load - Carico - Charge - Belastung - Carga - Carga

**NOMENCLATURE**

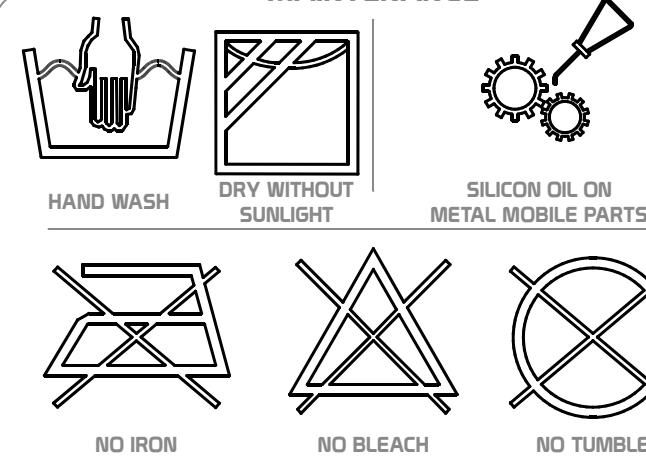


(A) PVC and foam bag, (B) Steel mass, (C) Stainless steel 2-movement carabiner, (D) Fast rubber.

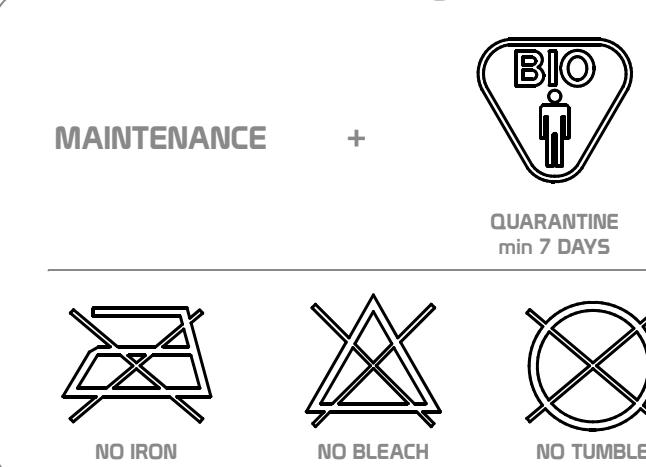


Read and always follow the information supplied by the manufacturer  
 Leggere e seguire sempre le informazioni fornite dal fabbricante  
 Toujours lire et suivre les informations fournies par le fabricant  
 Die Angaben des Herstellers müssen immer gelesen und befolgt werden  
 Lea siempre y respeta la información proporcionada por el fabricante  
 Leia e siga sempre as informações fornecidas pelo fabricante

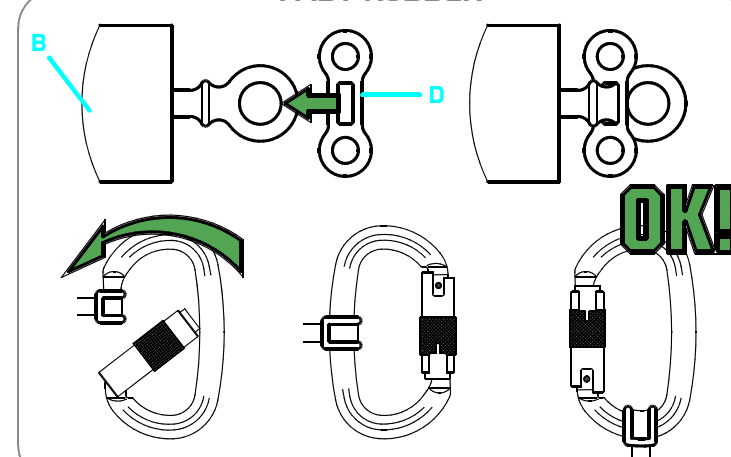
**MAINTENANCE**



**DISINFECTION**



**FAST RUBBER**



**STORAGE - TRANSPORT**

